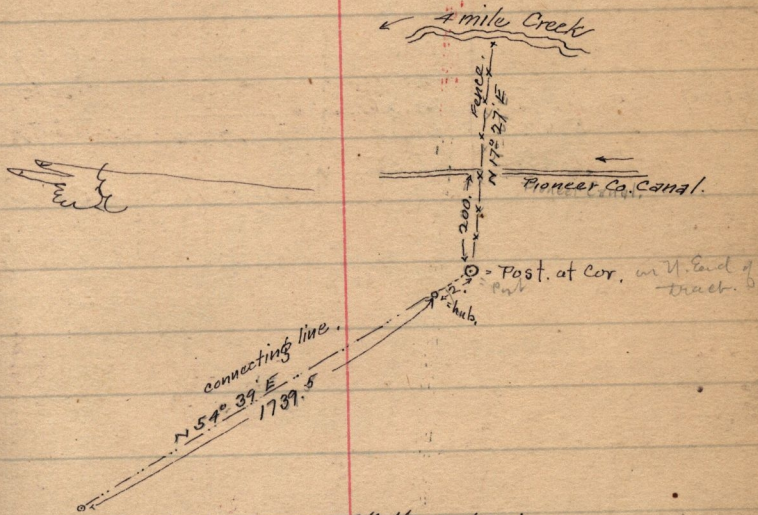


		N	S	E	W.
N 54 3/4° E	26.20	15.12		21.39	
S 3 1/2° W	24.70		24.66		1.51
N 85 3/4° W	11.60	.87			11.57
N 79 1/4° W	8.34	1.55			8.19
N	6.85	6.85			
		24.39	24.66	21.39	21.27
		.27			.12



Traverse table of entire Altafalta tract, only

	chs.	N	S.	E.	W.	L.	D.	D.M.D.
N 54° 45' E.	26.20	15.12		21.39		+ 15.12	+ 21.39	+ 21.39 ✓
✓ S 76° 07' E	10.66		2.58	10.34		- 2.58	+ 10.34	+ 53.12 ✓
✓ S 72 1/4° E	4.30		1.31	4.09		- 1.31	+ 4.09	+ 67.55 ✓
✓ S 4° 20' W	21.93		21.89		1.65	- 21.97	- 1.65	+ 69.99 ✓
N 80° 01' W	5.52	1.06			5.43	+ 1.06	- 5.42	+ 62.92 ✓
N 88° W	9.00	.31			8.99	+ .31	- 8.99	+ 48.51 ✓
N 85 3/4° W	11.60	.87			11.57	+ .87	- 11.57	+ 27.45 ✓
N 79 1/4° W	8.34	1.55			8.19	+ 1.55	- 8.19	+ 82.19 ✓
North.	6.85	6.85				+ 6.85		
		25.76	25.76	35.82	35.83			

Total acreage above 65.70 acres.
 minus 3.70
 + 0.00
 62.00 62.23 a.